



## **SIR JOSEPH BANKS VOYAGE**

**Port Lincoln - Adelaide  
30 January – 2 February 2017**

Contact Details:

Annie Roberts  
Marketing & Bookings  
0432 495 603  
[enquireoneandall@live.com.au](mailto:enquireoneandall@live.com.au)

Friends of the One & All Sailing Ship Inc  
PO Box 3214  
Port Adelaide SA 5015  
[www.oneandallship.com.au](http://www.oneandallship.com.au)





## **Come Sailing.....**

Take a journey back to when travel was only under sail.

We leave Port Lincoln's Tunarama Festival, and set sail for a unique adventure that will take you to the remote and beautiful Sir Joseph Banks of Islands.

As we sail the "locals" come out to play. The seals, dolphins and sea birds are never far away to watch and follow our moves. The wildlife take every opportunity to give us a show of their nimble moves above or below the waterline.

There are numerous opportunities to participate in different aspects of the sailing life. To keep the vessel manned 24 hours a day you will be divided into watches (teams). Your Watch Leader and other members of the crew can show "the ropes" to get involved with some or all of the following:

- Helming (steering) the vessel
- Setting the sails and adjusting them by hauling on ropes
- Standing watch (looking out for other ships)
- You may climb the masts and bow nets

STV One & All is a true hands-on vessel we invite all passengers to join in the experience of this remarkable ship. While we have plenty of crew to operate the ship, there is no expectation or pressure to do any of the above activities. Alternately, if activities are not your desire, sit back and relax as the water flows past and the birds soar high above the masts.

Set sail and have the opportunity to explore South Australia's well kept island gems and coastline.

Change your life forever by exploring our world from the deck of a tall ship and discover what you can achieve.





## The Voyage

**Boarding: 30 January 2017**  
**9am Brennan Wharf, Port Lincoln**  
**Arrive: 2 February 2017**  
**3pm McLaren Wharf Port Adelaide**

**Early Bird Booking: \$895pp**

Note Price changes  
1 December 2016: \$995pp

The voyage will include;-

- 4 Days Sailing from Port Lincoln to Adelaide, via the Sir Joseph Banks of Islands
- On board catering of hot & cold meals, snacks, cool drinks, tea & coffee. All food is prepared freshly on board. Dietary requirements can be arranged at time of booking.
- Accommodation in individual bunks with linen, pillows & blankets. We suggest you bring your own sleeping bag, toiletries & towels.
- All the activities included e.g. climbing rigging & bow nets, helming at the wheel, setting the sails with the crew, sail & navigation instructions.
- Safety equipment & wet weather gear

To ensure your well-being, enjoyment & safety we will have 12 crew to sail the ship

### Prepare for Sailing:

1. Access to the deck and facilities are down ladders. The ship is traditionally built, so lifts, ramps and disabled access are not available. Toilet facilities are located below the main deck area.
2. The amount of involvement in sail handling is up to the individual. Participants will have the opportunity to climb the mast and/or climb out on the bowsprit, helm at the wheel, hand some sails with the crew.
3. Flat soled closed shoes to be worn, bare feet, ugg boots, thongs, high heels will not be allowed on board. Recommended to wear comfortable clothing for ease of climbing and moving around the ship.
4. For safety reasons no smoking, and no alcohol can be brought, consumed or served on the ship.
5. Minimum age to travel & climb is 15 years. All children booked to sail need to be traveling with Adult or guardian.
6. We will not be able to offer accommodation on the ship while is in port the duration of the Festival.
7. Excludes travel to and from ship's departing and arriving ports.
8. Full payment is required at time of booking to secure sailing event. Booking & medical form are required to complete your booking. Please refer to terms & condition page. Payment can be by internet transfer, BankSA branch deposit or credit card.
9. Prices are GST inclusive.
10. Travel insurance should be considered for all travel within Australia.

**Booking Contact Details:**  
**Marketing & Bookings**  
**0432 495 603**  
[enquireoneandall@live.com.au](mailto:enquireoneandall@live.com.au)

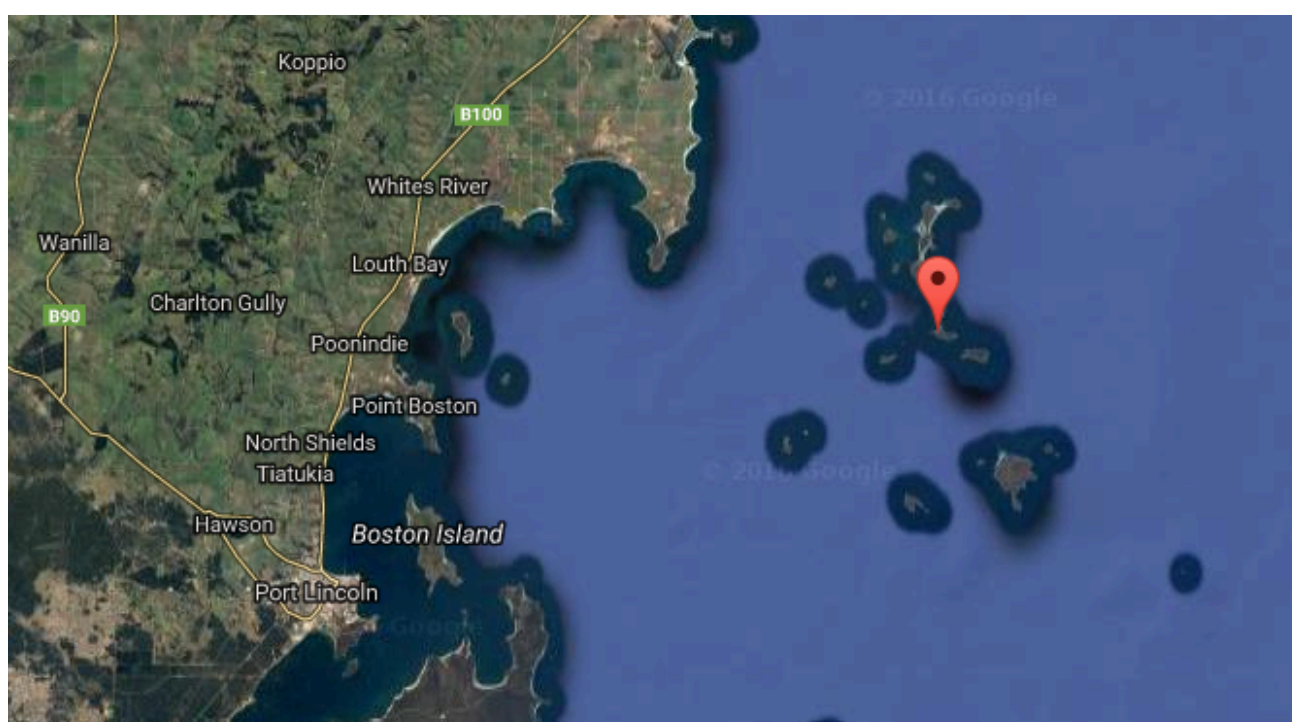
## About the Sir Joseph Banks of Islands...

The **Sir Joseph Banks Group** is an archipelago of 21 small islands with a collective land area of 1,275 hectares (3,150 acres) located in Spencer Gulf about 20 km off the eastern coast of the Eyre Peninsula in South Australia. Eighteen of the islands are in the Sir Joseph Banks Group Conservation Park while the surrounding waters are protected by Sir Joseph Banks Group Marine Park. It is considered to be an important seabird breeding site.

The islands were named by Matthew Flinders, on 23 February 1802 on his voyage of exploration in HMS *Investigator*. The group is named after Sir Joseph Banks, who was a sponsor of the *Investigator* voyage. Many islands in the group are named after places in Flinders' home county of Lincolnshire, England.

Most islands are vegetated with low shrub land dominated by nitre bush or African boxthorn. Some support tall shrub land dominated by coastal boobialla or coastal daisybush. Areas of sandy loam may support marsh saltbush. The larger islands retain patches of woodland. Islands previously used for grazing sheep have introduced grasses and burr medick.

Animal watchers - both onshore and in the water - will enjoy the diverse species that flock to the area, from one of the world's largest breeding colonies of Australian sea lions at Dangerous Reef to the unique velvet octopus, found in only a few places in South Australia.



# About the festival...



The Tunarama Festival occurs every Australia Day Long Weekend in January of each year, and has been a continuous fixture on South Australia's Calendar of Events since its inception in 1962, making our next Festival the 54<sup>th</sup>.



This makes us the third longest running consecutive annual Charity Event in the country, and something like the fifth longest consecutive Festival.

Originally introduced to celebrate the record tuna harvests in South Australian waters near Port Lincoln by the South Australian Tourism Commission and the then Port Lincoln Town Council, it has since enjoyed the support of the whole community year in year out. We have won numerous State and National Tourism Awards, and have been named as the Premier Regional South Australian Festival by SA Tourism Commission. It has now become a fixture on the international Festival circuit due in part to its

quirky nature and some of the fun events that we hold for the whole family, rather than being a single focus event. Many people across the globe now know of us because of the Tuna Toss, but we also claim the only horizontal Slippery Pole event held over water in the Southern Hemisphere, and in fact are the only event world-wide using the unique machinery we possess for it, crafted locally.

Coupled with our unrivalled fantastic location on the shores of the largest natural harbour in the Southern Hemisphere, this Festival is an event that enjoys so much repeat visitation and renown that the city has been filled to capacity at every Festival, almost since its inception, has been televised all over the world, has been the subject of many documentaries and is arguably one of the most engaging free Festivals intended for the whole family. Presenting something for all age groups, and holding events that cater to varied tastes has lead us to hold events such as the Boat Building Competition, which has always been watched by some of our largest crowds, numbering in the thousands of spectators. The event itself is an idyllic fit within the local landscape of seafarers, beaches, jetties and of course the tourists who are fascinated with the lifestyle afforded by such a wonderful locale.





### General Terms and Conditions for Charter on STV One & All

1. All passengers agree to behave in a responsible manner when on or in the vicinity of the ship and have due consideration for other passengers and the crew of the ship. Passengers may be refused entry to the ship if they are under the influence of alcohol or drugs.
2. Passengers agree to acquaint themselves with the safety rules of the ship at the safety briefing and obey those rules and any safety directives issued by the crew. Note that passengers will not be permitted to climb the rigging if they have recently consumed alcoholic beverages.
3. Passengers accompanied by children agree to supervise their children to ensure their safety at all times.
4. Booking Policies
  - (a) Reservation of voyage is confirmed on payment of full fee, booking and medical form.
  - (b) Voyage may be cancelled due to predicted extreme weather conditions or the ship being unexpectedly rendered unfit for sailing. In these cases any booking monies will be refunded in full to the charter group or person who made the booking. Travel Insurance is recommended to cover against any unforeseen circumstances.
  - (c) If a booking is cancelled by the charterer then the following cancellation fees may apply:

(i) 2 months or more prior to the event	5% of charter fee
(ii) 1 to 2 months prior to event	Deposit Paid
(iii) 1 month to 14 days prior to event	50% of Charter fee
(iv) less than 14 days before departure	100% of charter fee
5. As owner of the vessel, The One and All, the Department of Planning, Transport and Infrastructure (DPTI) and its affiliated entities, neither own nor operate, apart from the crew paid by DPTI, any person or entity which is to, or does, provide goods or services for this trip. Because DPTI does not maintain any control over the personnel, equipment, or operations of these suppliers, DPTI assumes no responsibility for and cannot be held liable for any personal injury, death, property damage, or other loss, accident, delay, inconvenience, or irregularity which may be occasioned by reason of (1) any wrongful, negligent, wilful, or unauthorized acts or omissions on the part of any of the tour suppliers, or other employees or agents, (2) any defect in or failure of any vehicle, equipment, instrument owned, operated or otherwise by any of these suppliers, or (3) any wrongful, wilful, or negligent act or omissions on any part of any other party not under the supervision or control of the Operator.