



## Sir Joseph Banks Islands Discovery Voyage

Port Lincoln - Port Adelaide  
28 January – 1 February 2018

Contact Details:  
Marketing & Bookings  
0432 495 603  
[hello@oneandallship.com.au](mailto:hello@oneandallship.com.au)

Friends of the One & All Sailing Ship Inc  
PO Box 3214  
Port Adelaide SA 5015  
[www.oneandallship.com.au](http://www.oneandallship.com.au)



One and All  
is a registered not for profit charity  
Each ticket booked supports the  
Youth Development Programs



## Tall Ship Sailing Adventure

### Be on deck...

*Come on board and see South Australia's greatest sailing asset.  
Walk the decks, be at the ship's helm, venture into the galley & the saloon.  
This handcrafted ship will tell you the stories of yesteryear of how  
sail transport & life on board was like.  
The STV One & All is a living and working vessel  
providing unique experiences for all.*

Here is the opportunity to join this 5 Day voyage to be part of the ship's 30<sup>th</sup> year of service to the community! This unique voyage will set sail to the remote and beautiful Sir Joseph Banks Group of Islands.

We will sail across the Gulf while the "locals" come out to play. The seals, dolphins and sea birds are never far away to watch and follow our moves. The wildlife take every opportunity to give us a show of their nimble moves above or below the waterline.

On this great adventure, the gems of these remote islands will show a history captured in time of the early settlements and native scrub lands. Our South Australian coastline will keep unfolding to features such as Althorpe Island, Wedge Island, the foot of Eyre Peninsular and the many lighthouses that dot our coast.

On board you will see the workings of this great ship and are welcome to join in the activities. No sailing experience is necessary as we will you teach the "ropes". These voyages are designed for the adventurer at heart!

There are numerous opportunities to participate in different aspects of the sailing life. To keep the vessel sailing, each person joins a watch (teams). The Watch Leaders and crewmembers will guide with the following:

- Helming (steering) the vessel
- Setting the sails and adjusting them by hauling on ropes
- Standing watch (looking out for other ships)
- Climb the masts and bow nets
- Navigation and course setting

STV One & All is a true hands-on vessel. We invite all passengers to join in the experience of this remarkable ship. While we have plenty of crew to operate the ship, there is no expectation or pressure to do any of the above activities. Alternately, if activities are not your desire, sit back and relax as the water flows past and the birds soar high above the masts. Change your life forever by exploring our coast from the deck of our tall ship – STV One and All.





## The Voyage

**Check in: 1 pm Sunday, 28 January 2018**  
One and All Ship, Brennan Wharf, Port Lincoln

**Arrive: 3pm Thursday 1 February 2018**  
McLaren Wharf, Port Adelaide

**Cost: \$1250pp** inc GST

### Voyage will include:-

- 5 Day one way voyage sailing from Port Lincoln to Port Adelaide
- Special events – Captain's theme dinner & shore picnic lunch
- Voyage handbook – Ship terms, knots, sails, and life at sea.
- All the activities included e.g. climbing rigging & bow nets, helming at the wheel, setting the sails with the crew, sail & navigation instructions, voyage presentations.
- Special Edition One and All Voyage Event shirt
- On board catering of hot & cold meals, snacks, cool drinks. All food is prepared freshly on board. Dietary requirements can be arranged
- Accommodation in individual bunks with linen, pillows & blankets. We suggest to bring own sleeping bag, toiletries & towels
- Use of ship's safety equipment & wet weather gear

Note: We recommend travel insurance within Australia  
Access to some Islands and shore locations may change depending on weather conditions



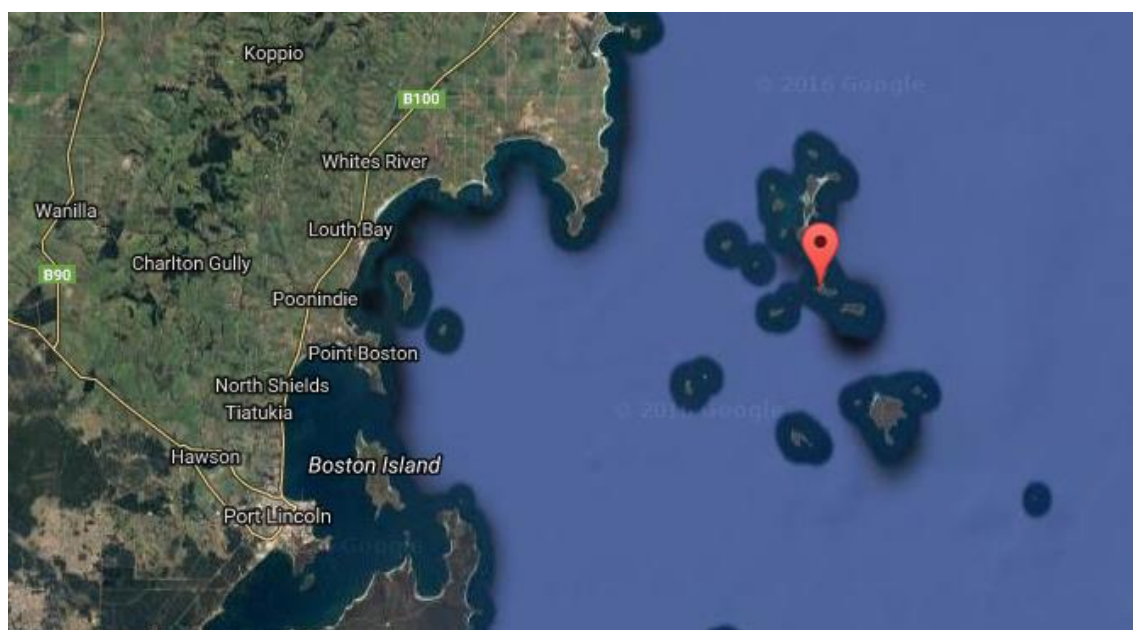
## About the Sir Joseph Banks Islands...

The **Sir Joseph Banks Group** is an archipelago of 21 small islands with a collective land area of 1,275 hectares (3,150 acres) located in Spencer Gulf about 20 km off the eastern coast of the Eyre Peninsula in South Australia. Eighteen of the islands are in the Sir Joseph Banks Group Conservation Park while the surrounding waters are protected by Sir Joseph Banks Group Marine Park. It is considered to be an important seabird breeding site.

The islands were named by Matthew Flinders, on 23 February 1802 on his voyage of exploration in HMS *Investigator*. The group is named after Sir Joseph Banks, who was a sponsor of the *Investigator* voyage. Many islands in the group are named after places in Flinders' home county of Lincolnshire, England.

Most islands are vegetated with low shrub land dominated by nitre bush or African boxthorn. Some support tall shrub land dominated by coastal boobialla or coastal daisy bush. Areas of sandy loam may support marsh saltbush. The larger islands retain patches of woodland. Islands previously used for grazing sheep have introduced grasses and burr medick.

Animal watchers - both onshore and in the water - will enjoy the diverse species that flock to the area, from one of the world's largest breeding colonies of Australian sea lions at Dangerous Reef to the unique velvet octopus, found in only a few places in South Australia.





**Before joining the voyage visit the...**



The Tunarama Festival occurs every Australia Day Long Weekend in January of each year, and has been a continuous fixture on South Australia's Calendar of Events since its inception in 1962, making our next Festival the 54<sup>th</sup>.



This makes us the third longest running consecutive annual Charity Event in the country, and something like the fifth longest consecutive Festival.

Originally introduced to celebrate the record tuna harvests in South Australian waters near Port Lincoln by the South Australian Tourism Commission and the then Port Lincoln Town Council, it has since enjoyed the support of the whole community year in year out. We have won numerous State and National Tourism Awards, and have been named as the Premier Regional South Australian Festival by SA Tourism Commission. It has now become a fixture on the international Festival circuit due in part to its

quirky nature and some of the fun events that we hold for the whole family, rather than being a single focus event. Many people across the globe now know of us because of the Tuna Toss, but we also claim the only horizontal Slippery Pole event held over water in the Southern Hemisphere, and in fact are the only event world-wide using the unique machinery we possess for it, crafted locally.

Coupled with our unrivalled fantastic location on the shores of the largest natural harbour in the Southern Hemisphere, this Festival is an event that enjoys so much repeat visitation and renown that the city has been filled to capacity at every Festival, almost since its inception, has been televised all over the world, has been the subject of many documentaries and is arguably one of the most engaging free Festivals intended for the whole family. Presenting something for all age groups, and holding events that cater to varied tastes has lead us to hold events such as the Boat Building Competition, which has always been watched by some of our largest crowds, numbering in the thousands of spectators. The event itself is an idyllic fit within the local landscape of seafarers, beaches, jetties and of course the tourists who are fascinated with the lifestyle afforded by such a wonderful locale.



Looking to stay on in Port Lincoln and need information? Contact the friendly team at

Port Lincoln YHA Backpackers  
Ph: (08) 682 3605  
Email: [portlincoln@yha.com.au](mailto:portlincoln@yha.com.au)

Travel to Port Lincoln can be by

Rex Airlines [www.rex.com.au](http://www.rex.com.au)  
Premiere Stateliner coaches [www.premierstateliner.com.au](http://www.premierstateliner.com.au)



### **Prepare for Sailing:**

- Access to the deck and facilities are down ladders. The ship is traditionally built, so lifts, ramps and disabled access are not available. Bathroom facilities are located below the main deck area.
- Flat soled closed shoes to be worn. Bare feet, ugg boots, thongs, high heels will not be allowed on board. Recommended to wear comfortable clothing for ease of climbing and moving around the ship.
- For safety reasons no smoking, and no alcohol can be brought, consumed or served on the ship.
- Excludes travel to and from ship's departing and arriving ports.
- STV One and All Medical forms are required to complete booking.
- Min age to sail 18 years.

### **Before You Book Please consider fitness requirements**

It is important that you are fit enough to be able to enjoy all the activities on this voyage. We ask you to consider carefully your ability for this voyage. If have any questions or you are concerned about your ability to meet the requirements of the trip, we urge you to contact us for further information and to consult your medical practitioner for an honest assessment.

### **Participation criteria for a voyage**

This voyage is appropriate for travelers in good health with good mobility. You should be able to comfortably participating in medium physical activity per day, including walking at an easy pace, sometimes on uneven terrain, climbing stairs and standing on deck.

### Your general fitness should allow you to:

- keep up with the group at all times
- stand for a reasonable length of time
- negotiate stairs, ladders and bunks
- get on and off boats with gangways and ladders
- move your luggage a short distance

If you have restricted mobility or existing medical conditions, it is likely that you will find this itinerary challenging. While we will do our best to reasonably accommodate the needs of all passengers, we reserve the right to refuse bookings, or request further medical information from your medical practitioner if we feel that the requirements of the voyage are too demanding for you and/or if local conditions mean we cannot reasonably accommodate you.